

ILC-HiGrade

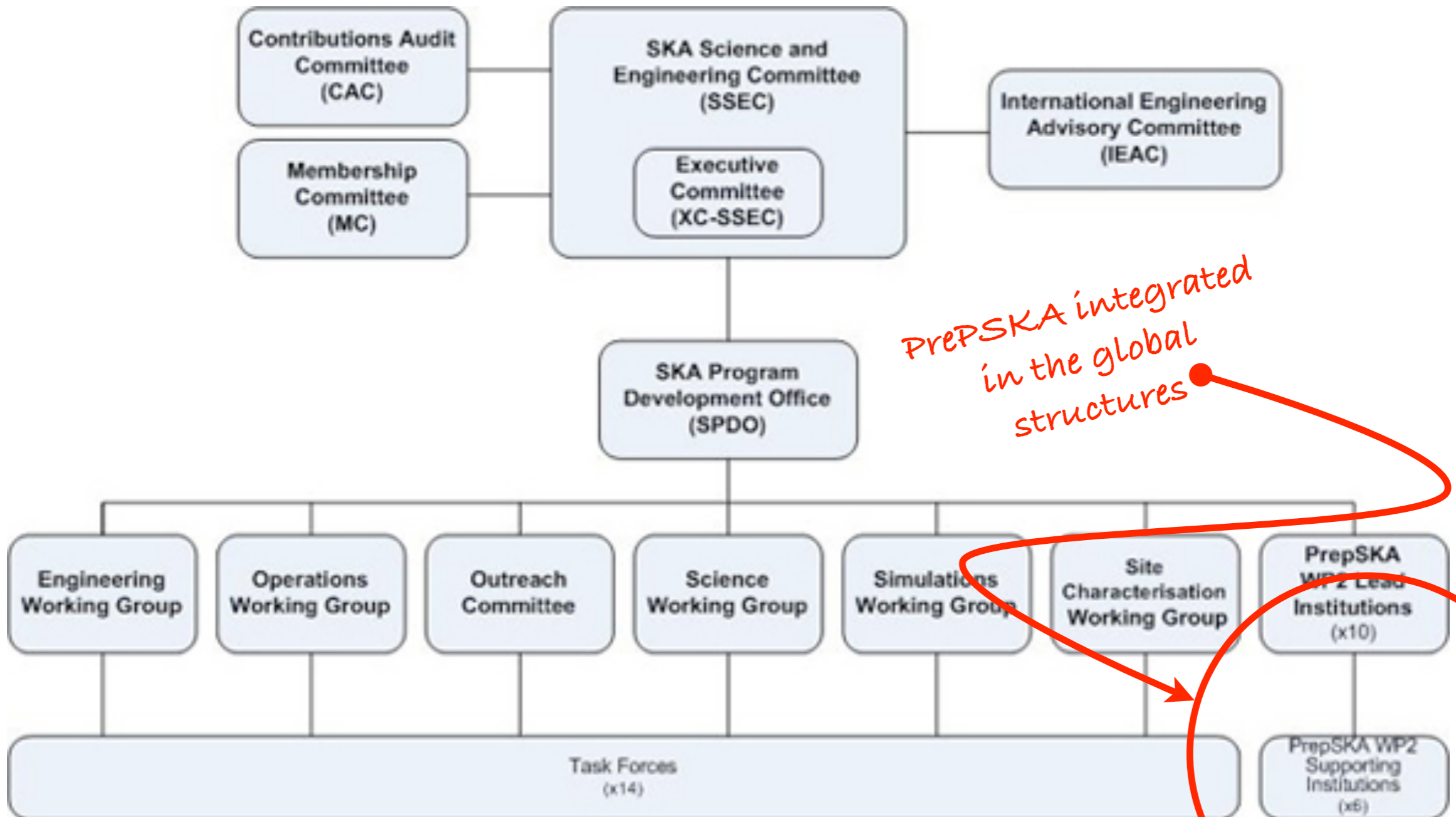
E.Elsen

PrePSKA

- Preparatory Phase Project for Square Kilometer Array
 - Global project with non European site (Australia, South Africa)
 - Headquarter in Manchester UK
- Dr Patricia Vogel
Netherlands Organisation for Scientific Research (NWO)
Coordinator of the Governance Work package in SKA
- SKA is only starting to organise the activities in their WP
 - Prepare and assessment of the options
 - European organization
 - Company Ltd etc.
 - Intergovernmental organisation



SKA Management Structure



Global ↔ European

- PrePSKA only covers European governance
 - will have to develop a model that can be implemented on the international scene
 - discussed the possibility to use PP phase to have European effort appear more coherent in discussion
 - seemed very much interested in our approach
 - they have the option of staged realization/early operation of the facility
 - agreed to exchange information on future developments in particular on the development of the global model

suggest to invite them to one of our next meetings

Report on Brussels Meeting, Sep 29

- Purpose of the meeting
 - Aspects of reporting
 - European Investment Bank
 - Legal framework
 - Outreach
 - HEP taken as a lead example, in particular LHC rap

Legal aspects for ERI

- ERIs
 - Hierarchy of applicable law
 - European community law
 - Law of state where the ERI has statutory seat
 - Law of the states where the ERI operates regarding safety, health

Budgetary Principles

- International Body (Article 151 (1)(b) of directive 2006/112/EC)
- International Organization (second indent of article (23(1) of directive 92/12/EEC and of Article 15, point (c) of directive 2004/18/EC)
 - Request for VAT exemption is key and probably the major obstacle for ratification